

## A pneumatic conveying system transports products such as grain, powder and other dry materials through a piping system

By pressure transport system, Simatek provides a suitable filter flange-to-flange. The filter is working as a receiving filter.

We recommend filter with a fan to avoid over-pressure in the filter.

By vacuum conveying system, Simatek provides a complete system comprising filter, pump, discharge system, piping and suitable ATEX components for explosive atmospheres.

### Benefits

#### Efficiency

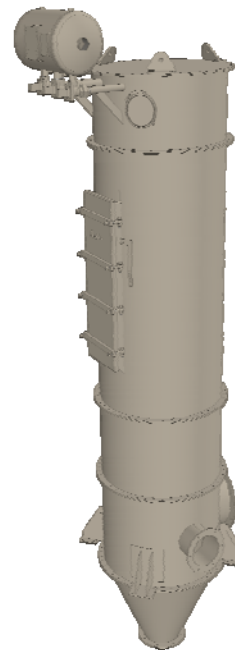
- Buying both filters and key components from Simatek, places the responsibility of the functionality with us as supplier.
- The complete system meets various standards and directives, among others the Machinery and ATEX directives.

#### Flexibility

- Unlike conveyers and elevators, the small duct systems allow you to move high product quantities quickly and/or between different levels.

#### Savings

- Energy efficient conveying system with long lifetime on bags and low emission.



### Features

#### Vacuum conveying

- Differential pressure: up to 0,5 bar
- Moderate duct length
- One or more intake points
- Single discharge point
- Dust-free product intake

#### Pressure conveying

- Differential pressure: more than 0,5 bars
- Long duct length
- Single intake point
- Several discharge points

### Applications

- |   |   |   |  |
|---|---|---|--|
| <ul style="list-style-type: none"><li>• Grain and feed industry</li><li>• Chemical industry</li><li>• Cement industry</li><li>• Food industry</li></ul> | <ul style="list-style-type: none"><li>• Brewery</li><li>• Paper industry</li><li>• Plastics industry</li><li>• Metal industry</li></ul> | <ul style="list-style-type: none"><li>• Fish feed industry</li><li>• Pet-food industry</li><li>• Recycling industry</li><li>• Wood industry</li></ul> | <ul style="list-style-type: none"><li>• Mineral industry</li><li>• Fertiliser industry</li></ul> |
|---|---|---|--|

### Construction form

#### Inlets:

17 + 17 WB

#### Top:

4T-R  
4T1-R  
4T2-R  
4T3-R

## Selecting filter size

SimPact® 4T-R		Filter area m <sup>2</sup>								
Type JM	7	10	14	21	32	41	52	70	90	
Bag Length - dm	10	3,1	4,4	6,2	9,2	14,1	18,0	22,9	30,8	39,6
	15	4,6	6,6	9,2	13,9	21,1	27,0	34,3	46,2	59,4
	20	6,2	8,8	12,3	18,5	28,1	36,1	45,7	61,6	79,2
	25	-	11,0	15,4	23,1	35,2	45,1	57,2	77,0	99,0
	30	-	-	18,5	27,7	42,2	54,1	68,6	92,4	118,8
	35	-	-	21,6	32,3	49,3	63,1	80,0	107,8	138,5
	40	-	-	-	-	-	72,1	91,5	123,2	158,3
	45	-	-	-	-	-	81,1	102,9	138,5	178,1
50	-	-	-	-	-	90,2	114,4	153,9	197,9	

For larger filter sizes, please contact Simatek's sales department

## Selecting the construction form



Dust load:

Unlimited

\*) Wide-Body

## Selecting the top cover for the clean-air chamber

<p>4T-R</p> <ul style="list-style-type: none"> <li>• Pressure-shock resistant</li> <li>• Side Removal</li> <li>• Installation of bags through the mandoor</li> </ul>	<p>4T1-R</p> <ul style="list-style-type: none"> <li>• Non-pressure shock resistant</li> <li>• Top Removal</li> <li>• Installation of bags from the clean-air side</li> </ul>	<p>4T2-R</p> <ul style="list-style-type: none"> <li>• Pressure-shock resistant top with hinged cover</li> <li>• Top Removal</li> <li>• Installation of bags from the clean-air side</li> </ul>	<p>4T3-R</p> <ul style="list-style-type: none"> <li>• Pressure-shock resistant "Walk in plenum" (Penthouse)</li> <li>• Top Removal</li> <li>• Installation of bags from the clean-air side</li> </ul>
--	--	--	---